



Community Safety

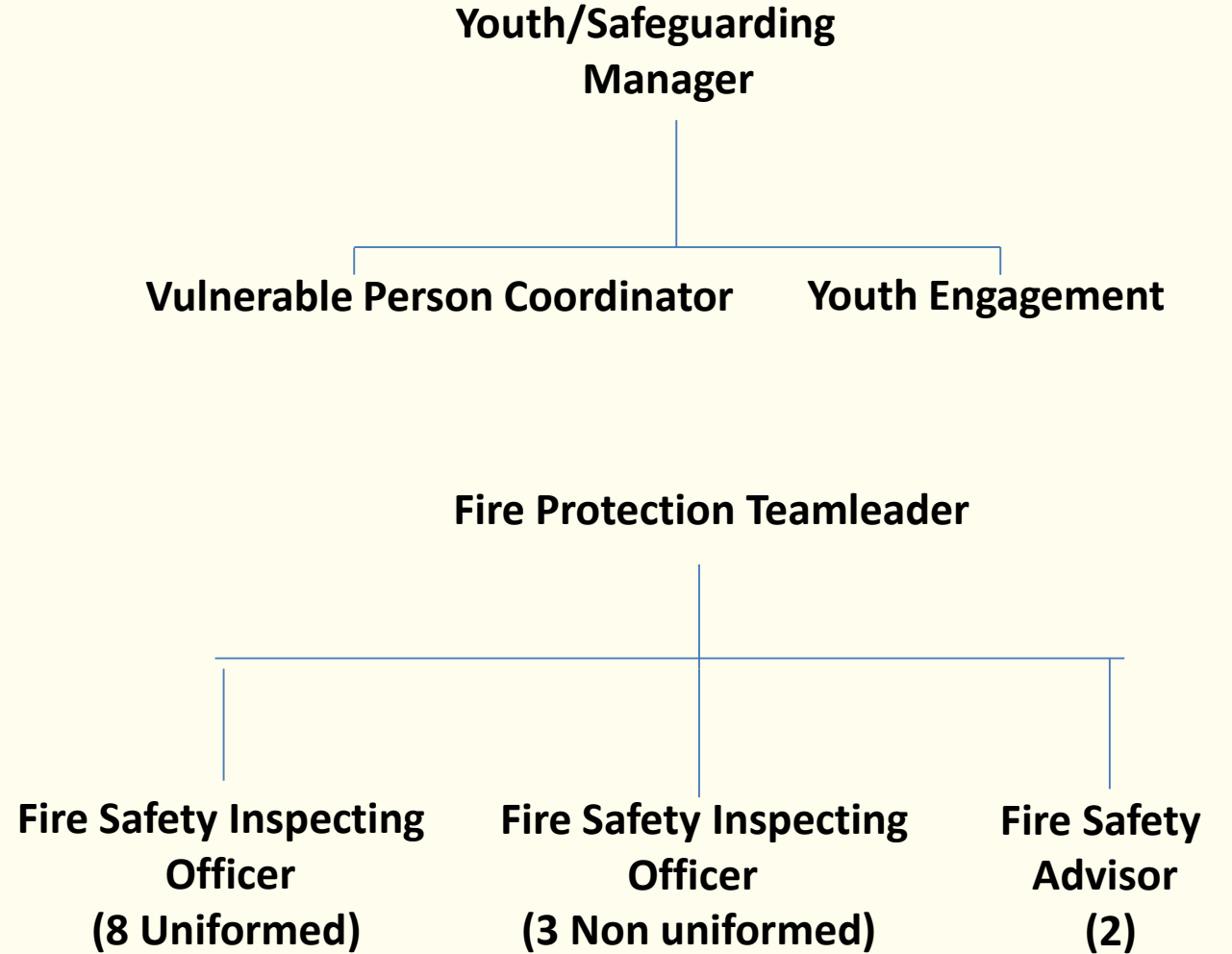
Protection

Prevention

**LEICESTERSHIRE
FIRE and RESCUE SERVICE**

Agenda Item 9

Department Overview



2

What we do...

Prevention

- Deliver School Education Programme to years 1 and 5 Road Safety year 11
- Post Incident Response to serious or fatal fire
- When possible support stations at events/local initiatives
- Primarily work with the 'most vulnerable' in the community
- A tailored Home Safety Check (HSC) including Falls
- Fire safety talks to local community groups
- HSC 'Extra Mile'
- Road Safety

Protection

- Fire Safety Audits – High Risk Premise
- Business Engagement

Performance and Achievements

2018-19



Safer Communities

Prevention



4,790
smoke
alarms
fitted



6,746
Home Fire
Safety Checks



1,068
community
safety events

19,093
people engaged
in road safety



We carried out:

421
fire safety
advice
requests

550
fire safety
concerns

924
building
regulations
inspections

444
fire
safety
audits



226
licensing
consultations

161
specific
inspections

53
desk-based
inspections

-
- All of this work resulted in the following being served:
- 88 action plans
 - 29 interim measures
 - 20 prohibition notices
 - 34 formal notices
 - 108 deficiency notices
 - 4 alteration notices

Protection



Response



8,666
emergency incidents

3,020 fire alarms

2,569 fires

2,315 special services

762 road traffic collisions



19,156
emergency
999 calls
answered

We attended:



95.5%
of life
threatening
incidents
within 10
minutes



99.5%
of non-life
threatening
incidents
within 20
minutes



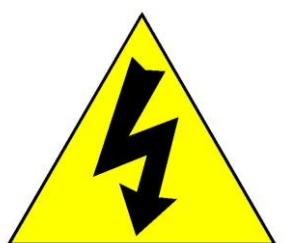
99%

rated the service they received as 'satisfactory' or better.

What is a Home Safety Check (HSC)



- A free safety talk in your home
- Delivered by
 - A member Leics Fire and Rescue Service
 - Community Educators
 - Operational firefighters
 - External partners
- Tailored to the person / behaviour / environment / risks in the home
- Will take as long as it takes!
- May include the installation of safety devices
- May include the need to refer to other partner agencies for further support



Warm
homes



How to request a Home Safety Check

<http://www.leicestershire-fire.gov.uk/>

LEICESTERSHIRE

FIRE and RESCUE SERVICE *protecting our communities*

Home Fire Safety Check

What is a home fire safety check?

This is a service which offers you advice on how to prevent fires and what to do in the event of a fire. It is carried out by Leicestershire Fire & Rescue Service and its partners and takes place at your home, lasting approximately 30 minutes. As part of this service, smoke alarms may be fitted and subsequent maintenance and replacement of these becomes the responsibility of the homeowner. Smoke alarms are not provided as a matter of course.

Who is eligible?

We only target our visits at people and places where we know there is a higher risk of fire. The information supplied in the application process will

Partner agency

Partner Agency Request

Use this form to request a visit from Leicestershire Fire and Rescue Service to a person's home, to offer advice on how to make fire. Alternatively, [click here](#) to be taken back to the main data submission portal.

Request details *

Please select one

Referrer/Occupant Details

Assessment

Please answer the following series of questions based on the person/property where the home fire safety check will be conducted.

Is the client a single parent with dependent children? *

Please select one

Is the client or anyone living with the client aged over 75? *

Please select one

Does the client or anyone living with the client have hearing difficulties? *

Please select one

Does the client or anyone living with the client have difficulties with sight? *

Please select one

Does the client or anyone living with the client smoke more than 15 times per day? *

Please select one

Is the client or anyone with the client known to be a problem drinker or substance user? *

Please select one

Does the client suffer from a mental health condition? *

Please select one

Is the client or anyone living with the client on medication that causes drowsiness? *

Please select one

Is the client or anyone living with the client subject to a recent arson threat? *

Please select one

First Contact Plus

Home | About Us | Our Services | Partner Resources | Partner Login

Search...

Your First Contact for Information Advice and Support in Leicestershire

North West Leicestershire | Charnwood | Melton
Hinckley & Bosworth | Blaby | Oadby & Wigston
Harborough

Improving Your Health > | Falls > | Feeling Safe > | Living Independently >

Falls – What do we look for ?

LISTEN – Do they have a fear of falling / slipping or difficulty in getting around / are they getting out?

OBSERVATION – do they shuffle / problem with balance / Struggle to get out of the chair?

Clutter

Broken mobility equipment

Poor lighting

Worn carpets

Pendant alarms / lifelines not working

Lift / elevator access

Trailing flexes and electrical leads

Loose or missing bannisters or handrails on the stairs

Unsafe / unsteady furniture

Steep steps to access the property

Alcohol

Worn out slippers

Loose rugs, mats, bathroom mats

Stock piles medication

Working in conjunction with the CCG the team can complete an EFRAT or MFRAT
in order to refer the individual

Safety Devices...

- Deaf alarms
- Promote Emergency SMS
 - www.emergencysms.org



Contact **999**
by SMS text

If you cannot make voice calls, you can now contact the **999 Emergency Services** by SMS text from your mobile phone

A stylized illustration of a hand holding a black mobile phone, with the hand's fingers positioned over the keypad. The background is a solid red color.

- Letter box jammers
- Window alarms



- Smoke alarms
- Carbon monoxide detectors



Hoarding



1

2

3



4

5

6



7

8

9



6

Hoarding

The Engagement problem

- The hoarder may have care needs
- There may be neglect or self neglect
- There may be mental health needs
- Greatly increased risk of fire and fatalities Fire Service Access
- Increased risk to other tenants, increased risk to the property from fire damage and neglect
- Adult Social Care –Ensuring care needs are met Police ASB issues with the hoarder as a victim or perpetrator
- GP Mental and physical wellbeing of their patient
- Hospitals Cost of trips and falls over clutter

There is an assumption to be made that the best person to judge an individual's well being, is the individual themselves (Care Act Part 1(3)(a))

Youth Engagement

Firecare

Free of charge service aimed at early Intervention for young people 3 – 17 years who set fires or play with fire

Fire Skills

Dependent on external funding, commissioned by schools, local councils etc. Approx. (max) £1600 per course for up to 14 young people

30 hour experience (can be delivered very flexibly, over at least 5 days) consisting of basic fire-fighting drills such as hose-running and pitching ladders mixed in with “classroom” session on arson/ hoax calls/ first aid.

Fire Cadets

Weekly 2 hour after-school sessions open to all young people aged 13 – 17 years.

Links into the new government-backed National Fire Cadets model, focusing on community action and volunteering.

Central Western Market Harborough Stations

VF4 Car and Wasted Lives Roadshow Fatal Four



Wasted Lives Roadshow

Fatal Four



- Schools colleges and young people presentation
- 14-24 years old
- Seatbelts, Mobile Phones, Speeding, Drink and Drugs
- Real life case studies
- Passenger responsibility

13

360 VR Goggles Road Safety Story



Biker Down and Fire Bike



- Focus on “born again bikers”
- First aid at scene of an incident
- Science of being seen
- Attending Biker events
- Courses free to general public
- Currently running 1-2 a month

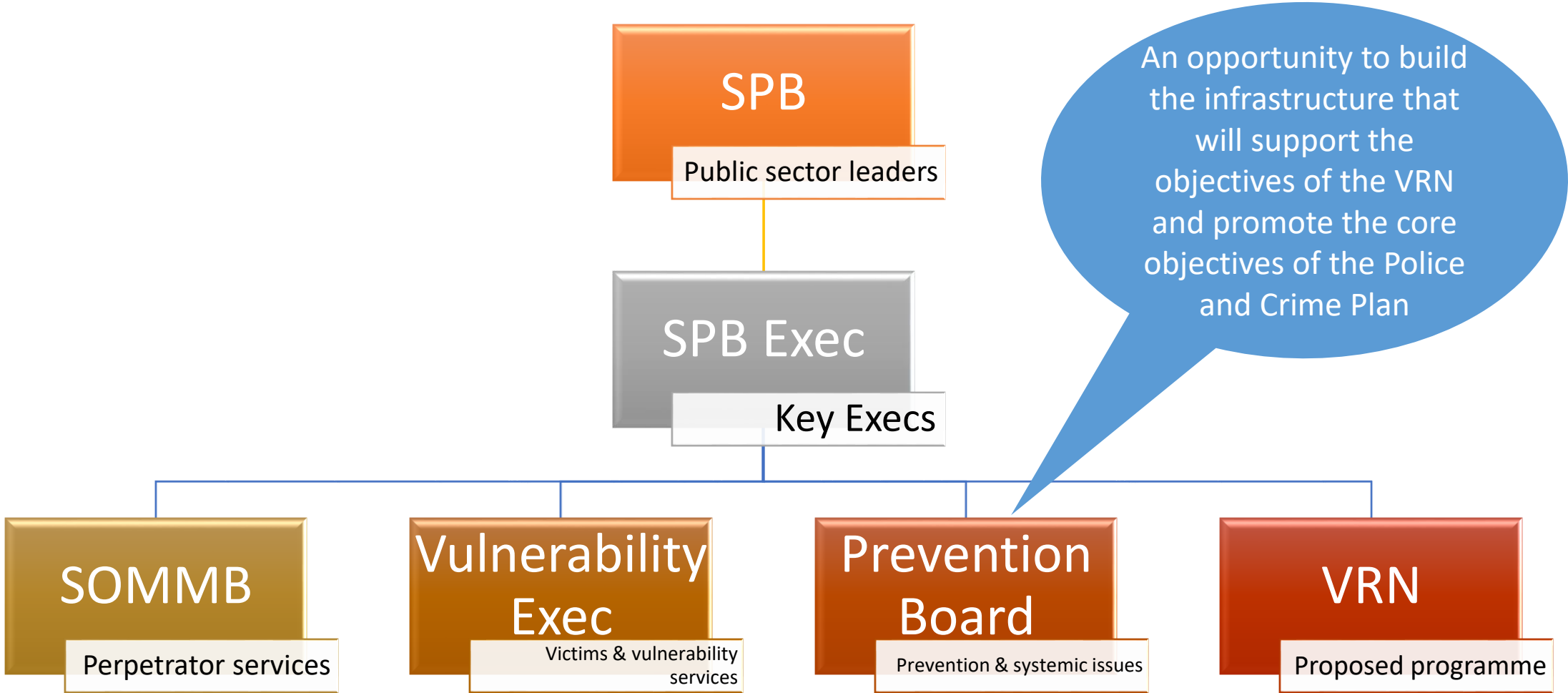
Thank you
Any questions?



OPCC

Paul Hindson LSCSB

Strategic Partnership Board



Prevention in Policing

Core element of Police & Crime Plan

Neighbourhood Policing & problem solving

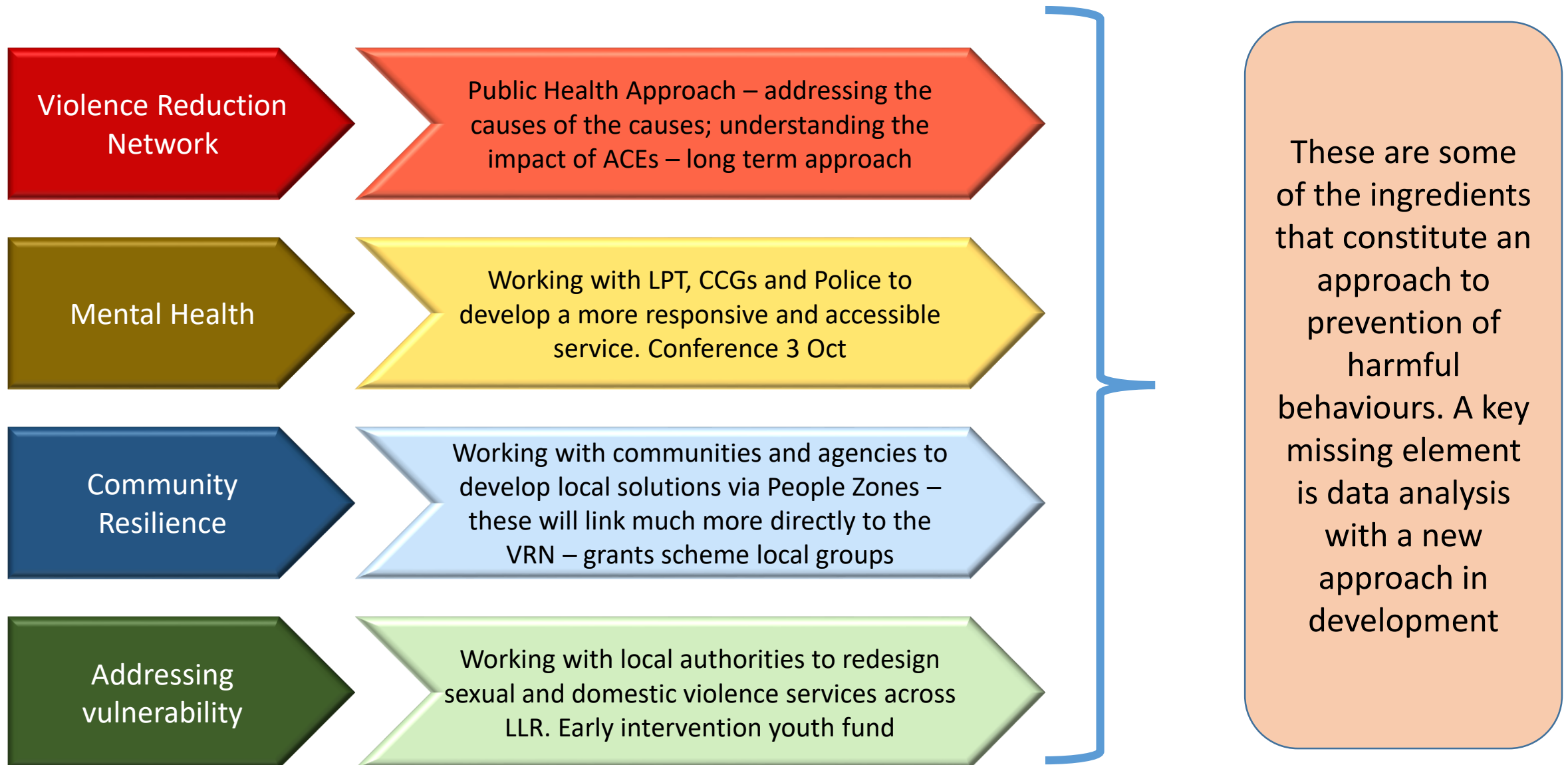
Offender management

Safeguarding

Police operations

Addressing the drivers of harmful behaviour across the partnerships as a whole – drugs, mental health, alcohol

Components of Prevention



What's happening in SPB?

Gypsy/Roma/Traveller developments

New analytical solutions

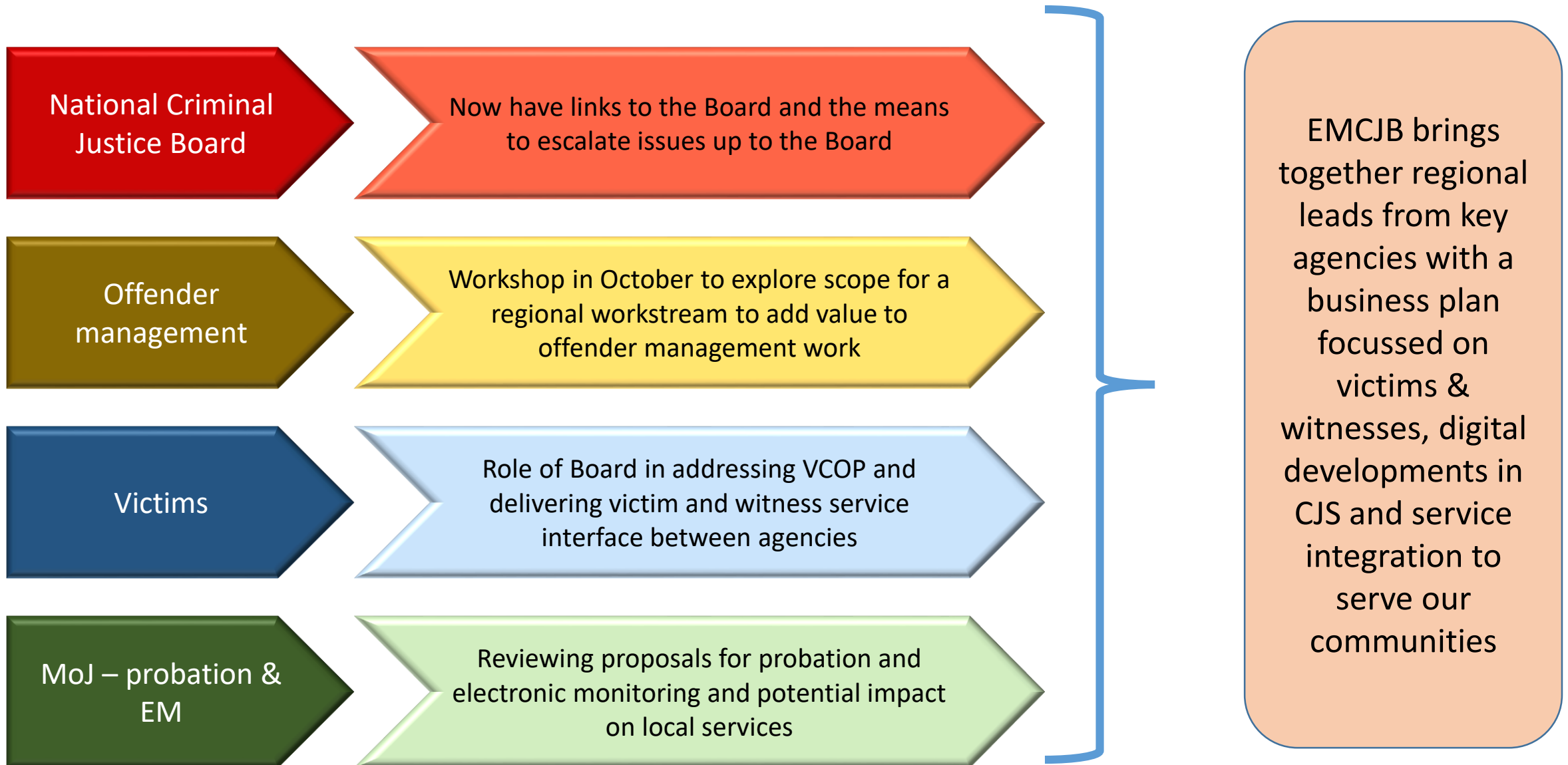
Integrating with developments in PCNs

MoJ commissioning/new probation arrangements

Mental health proposals – Most Appropriate Agency

Section 106 proposals

East Midlands Criminal Justice Board



CSP Forum

Meeting in Sept – analytical requirements

Strategic priorities

Working together

Sharing good practice

Public Health Duty

This page is intentionally left blank



COMMUNITY SAFETY PARTNERSHIP

Addressing Serious Crime

25

Agenda Item 12

COMMUNITY SAFETY PARTNERSHIP

 *Consultation*

 *Community*

 *Intelligence*

 *Developing a Strategy*

COMMUNITY SAFETY PARTNERSHIP

27

 *Operation Camel* 

COMMUNITY SAFETY PARTNERSHIP



VIDEO

Intelligence and Information are Vital

29

007TM



COMMUNITY SAFETY PARTNERSHIP

 **THREAT**

 **RISK**

 **HARM**

COMMUNITY SAFETY PARTNERSHIP

31

 *Information Sharing* 

This page is intentionally left blank

Violence Reduction Network

Leicester, Leicestershire and Rutland



Violence
Reduction
Network



POLICE & CRIME
COMMISSIONER
for Leicestershire

Prevention | Partnership | Protection

What is the Violence Reduction Network?

- LLR's version of a Violence Reduction Unit
- Based on the partnerships already in place and the extensive work already underway
- It includes a small central team responsible for arriving at a more comprehensive understanding of the problem and the development and implementation of a LLR Violence Prevention Strategy



@VR_Network



Violence
Reduction
Network

Vision and Mission

Our **vision** is for Leicester, Leicestershire and Rutland to be a place where all people, families and communities are safe, healthy and free of violence.

Our **mission** is to achieve “prevention through connection” by building an inclusive, collaborative and courageous network which will drive the short and long-term system-change required to successfully tackle the causes of violence across the life-course.

Scope

- The VRN has adopted the WHO definition of violence:

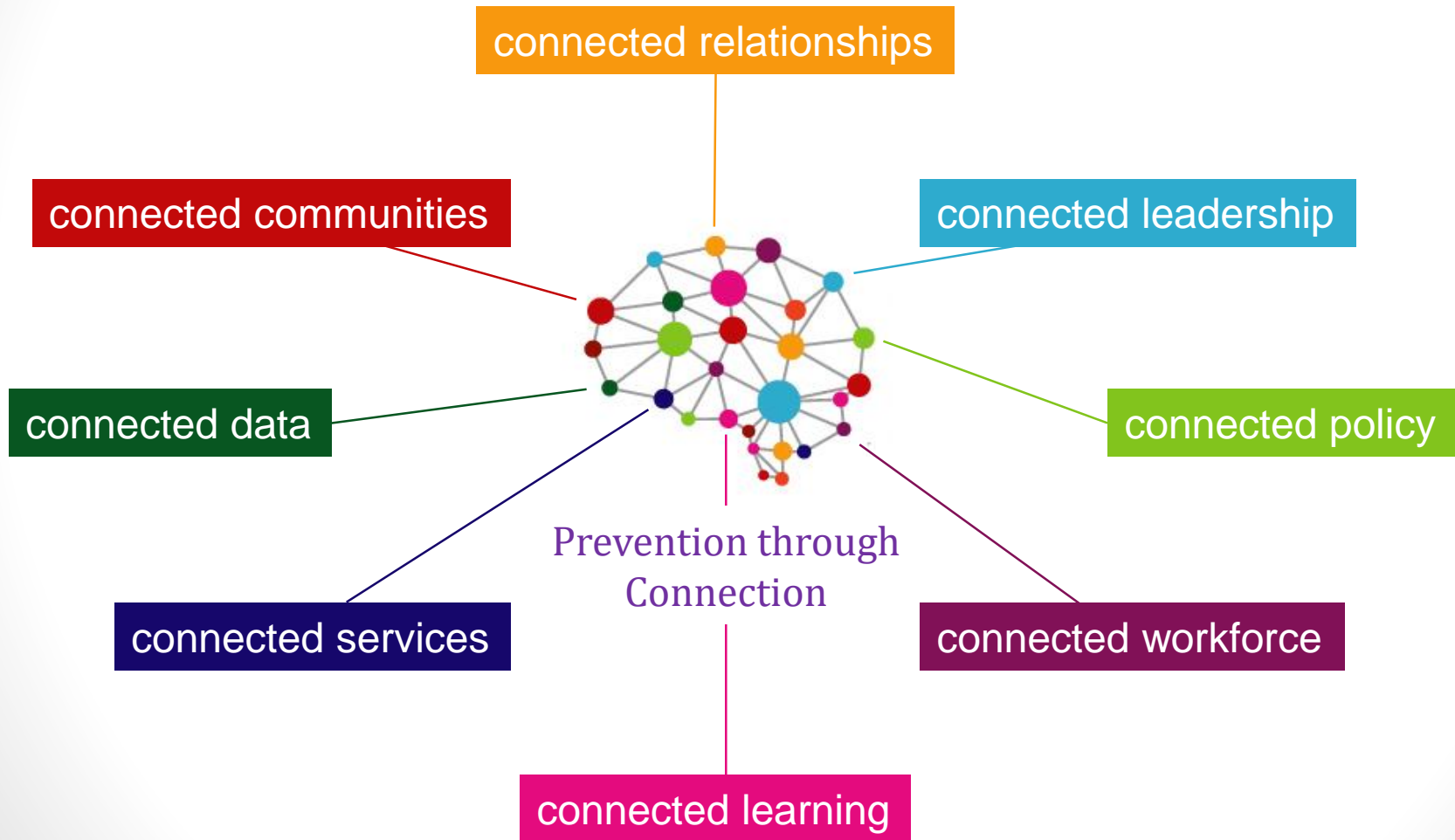
“The intentional use of physical force or power, threatened or actual, against oneself, another person, or against a group or community, that either results in or has a high likelihood of resulting in injury, death, psychological harm, maldevelopment, or deprivation.”

- Initial focus will be on youth violence (up to age 25) in public spaces and in particular serious youth violence involving weapons.
- However, research suggests opportunities for prevention will be missed if we only focus on one particular form of violence.

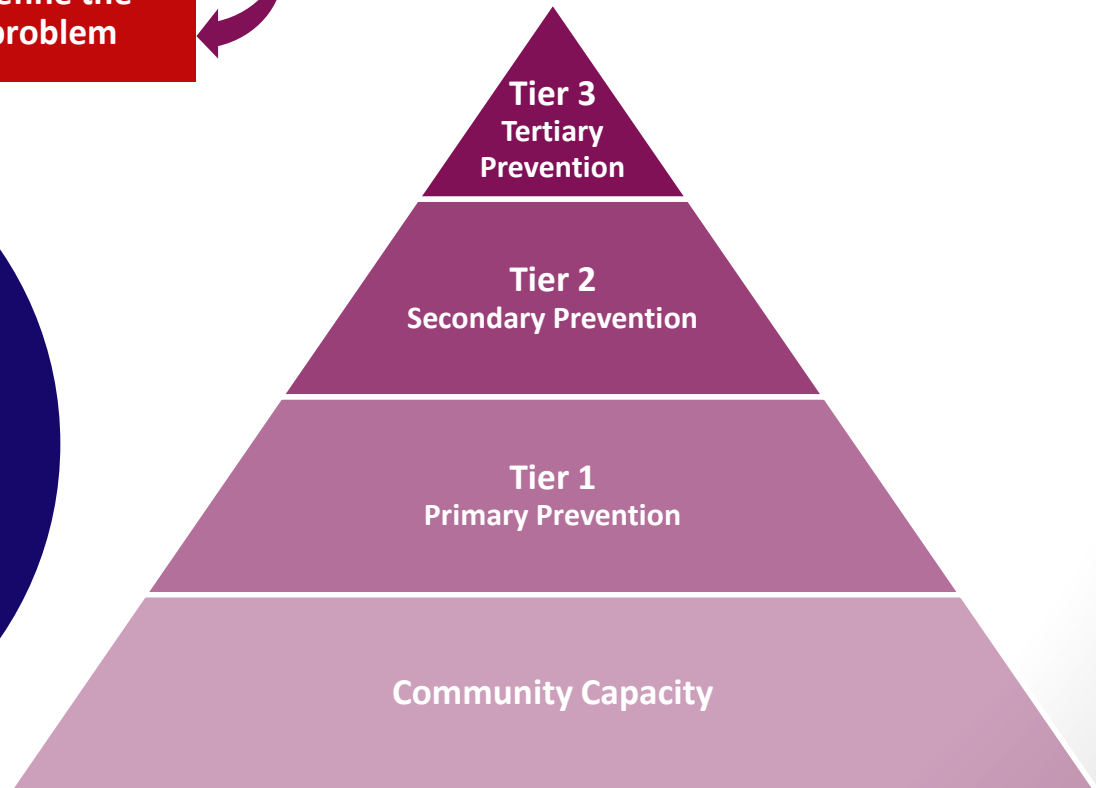
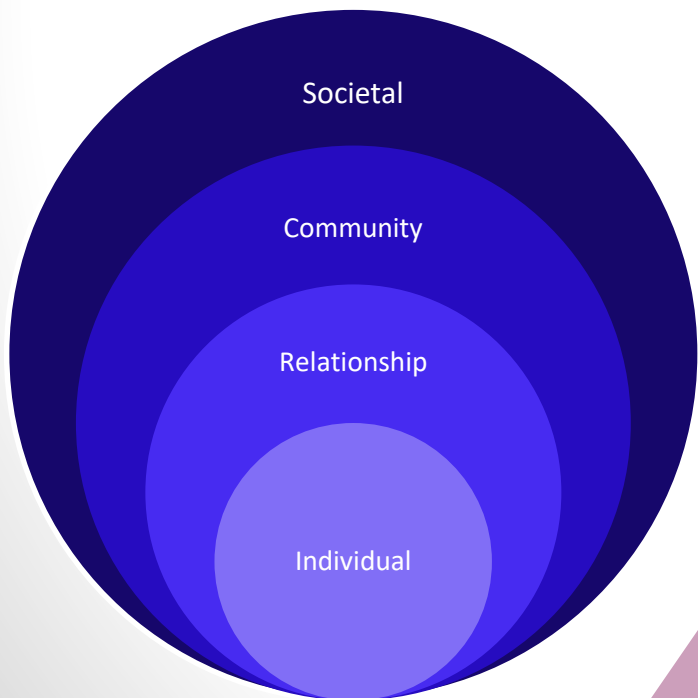
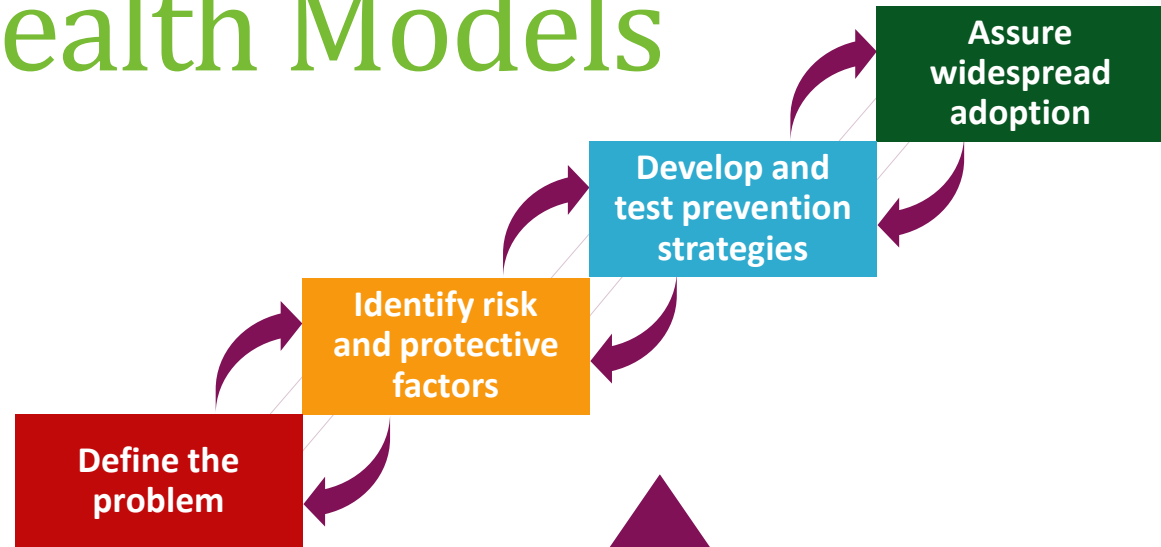
Home Office Expectations

- Adopt a 'public health approach'
- Mandatory Products
 - A Strategic Needs Assessment; the 'problem profile'.
 - A Response Strategy.
- Success Measures
 - A reduction in hospital admissions for assaults with a knife or sharp object and especially among those victims aged under 25,
 - A reduction in knife-enabled serious violence and especially among those victims aged under 25,
 - A reduction in all non-domestic homicides and especially among those victims aged under 25 involving knives.
- 20% of funding to be spent on interventions
- Participation in an evaluation

Our Approach



Public Health Models



The VRN Programme

- Direct governance is through the VRN Programme Board which has a direct line into SPB
- The Programme has 9 inter-related projects:

1. Leadership & Governance	2. VRN Development	3. Community Engagement
4. Service Mapping	5. Analysis & Evaluation	6. Service Design & Implementation
7. Workforce Development	8. Communication & Campaigns	9. Policy Integration

Progress Update

- Establishing the programme
- Designing vision, brand and our communications strategy
- Establishing the central team
- Home Office visit
- Concluding service mapping
- Scoping a Serious Violence JSNA
- Collating the evidence into an 'effectiveness model' for health checks
- Commencing the ISA work in preparation for data collation
- Testing new services

CSPs and the VRN

- CSPs are already in the business of preventing and reducing violence
- Opportunity to mobilise now for the new Serious Violence Public Health Duty
- Small working group to articulate the relationship between CSPs and the VRN?